

# Weld & Metal Seal Fittings



## 金属面密封接头

### 特征:

- ◎ 金属对金属密封，在真空到高压范围内提供无泄漏服务
- ◎ 精密制造的垫片确保最高性能
- ◎ 螺母端测试孔易于进行泄漏测试
- ◎ 螺母内螺纹镀银
- ◎ 标准平均表面粗糙度Ra0.25 μm 或电解抛光Ra0.13 μm 可选
- ◎ 所有密封面和阳螺纹端都有塑料帽保护
- ◎ 尺寸范围：1/16" 至 1" 和 6 mm 至 18 mm
- ◎ 每一个接管和本体都刻有尺寸、材料和炉号

### 技术数据:

#### ◎ 螺纹标准

螺纹类型	标准
NPT螺纹	ASME B1.20.1, SAE AS71051
SAE/MS直螺纹	ASME B1.1, SAE J475

#### ◎ 工作温度

元件	材料	最高温度
接头	316 SS	538 °C (1000 °F)
	316L SS	
	316L VAR SS	
	316L VIM+VAR SS	
垫片	316L SS	204 °C (400 °F)
	铜	
	镍	

#### ◎ 材料

材料	棒料	锻件	代号
接头材料			
316 SS	ASTM A479	ASTM A182	16
316L SS	SEMI F20	SEMI F20	40
316L VAR SS			40V
316L VIM+VAR			40W
垫片材料			
316L SS	ASTM A240		40
铜	ASTM B152		CU
镍	ASTM B162		NI

#### ◎ 焊接端管尺寸及壁厚

英制		公制	
Tube 管外径 in.	壁厚 in.	Tube 管外径 mm	壁厚 mm
1/8	0.028	6	1.0
1/4	0.035	8	1.0
3/8	0.035	10	1.0
1/2	0.049	12	1.0
3/4	0.049	18	1.5
1	0.065		
1 1/2	0.065		
2	0.065		

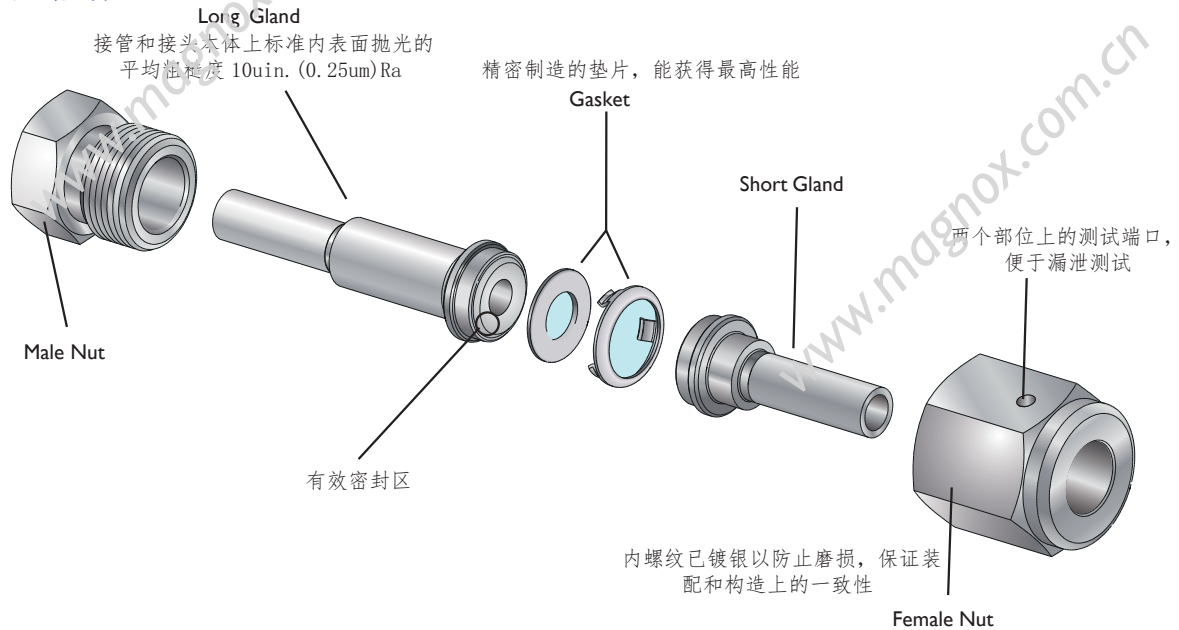
#### ◎ 工作压力

样本所示工作压力是在室温下根据 ASME B31.3 和 B31.1 计算。

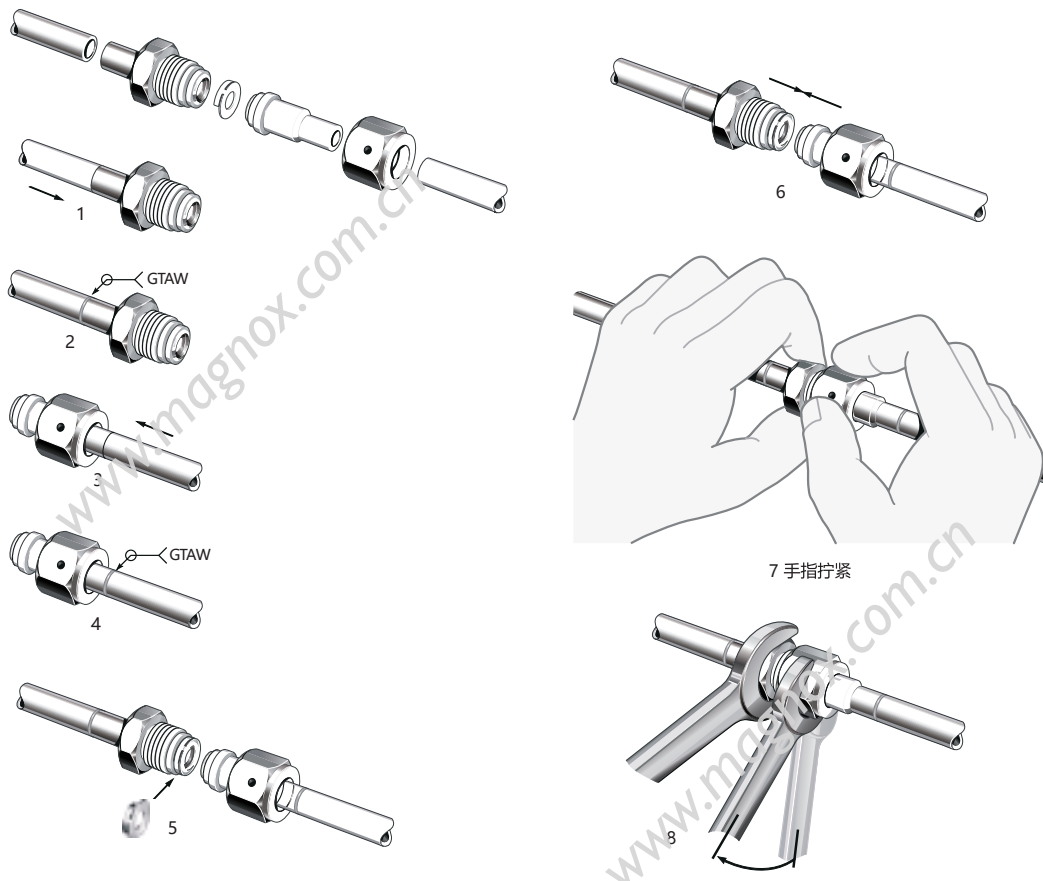
## 测试

VCR接头最大氦气泄漏率为 $4 \times 10^{-11}$  std cm<sup>2</sup>/s。

## 典型装配组合



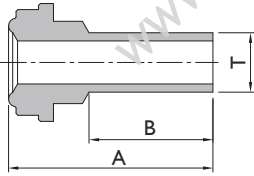
## 安装指南



1. 如上图所示, 依次安装接管、螺母、垫片和阳螺纹螺母, 手紧螺母。
2. 对于使用 316L 不锈钢或镍垫片的接头, 将阳螺母或接头本体牢牢固定, 用扳手拧螺母1/8圈。对于铜垫片则只需拧1/4圈。

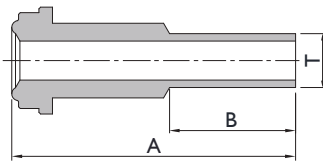
# Weld & Metal Seal Fittings

## Female Gland 短焊接管



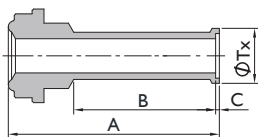
Tube Size	Head Size	Ordering Number	Dimensions, mm		
			A	B	T
1/8"	1/8"	V2SG19	27.40	19.05	3.18
1/4"	1/4"	V4SG6	15.24	6.35	6.35
1/4"	1/4"	V4SG10	18.89	10.00	6.35
1/4"	1/4"	V4SG19	27.94	19.05	6.35
3/8"	1/2"	V6SG6	15.75	6.35	9.53
3/8"	1/2"	V6SG10	19.40	10.00	9.53
3/8"	1/2"	V6SG19	28.45	19.05	9.53
1/2"	1/2"	V8SG6	15.75	6.35	12.70
1/2"	1/2"	V8SG10	19.40	10.00	12.70
1/2"	1/2"	V8SG19	28.45	19.05	12.70
3/4"	3/4"	V12SG19	34.50	19.05	19.05
1"	1"	V16SG19	38.60	19.05	25.40
1/4"	1/2"	V8 x 4SG6	15.75	6.35	6.35
1/4"	1/2"	V8 x 4SG10	19.50	10.00	6.35
1/4"	1/2"	V8 x 4SG19	28.45	19.05	6.35

## Male Gland 长焊接管



Tube Size	Head Size	Ordering Number	Dimensions, mm		
			A	B	T
1/8"	1/8"	V2LG19	36.00	19.05	3.18
1/4"	1/4"	V4LG6	30.48	6.35	6.35
1/4"	1/4"	V4LG10	34.13	10.00	6.35
1/4"	1/4"	V4LG19	43.18	19.05	6.35
3/8"	1/2"	V6LG6	32.77	6.35	9.53
3/8"	1/2"	V6LG10	36.42	10.00	9.53
3/8"	1/2"	V6LG19	45.47	19.05	9.53
1/2"	1/2"	V8LG6	32.77	6.35	12.70
1/2"	1/2"	V8LG10	36.42	10.00	12.70
1/2"	1/2"	V8LG19	45.47	19.05	12.70
3/4"	3/4"	V12LG19	51.56	19.05	19.05
1"	1"	V16LG19	58.93	19.05	25.40
1/4"	1/2"	V8 x 4LG6	32.77	6.35	6.35
1/4"	1/2"	V8 x 4LG10	36.42	10.00	6.35
1/4"	1/2"	V8 x 4LG19	45.47	19.05	6.35

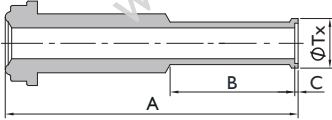
## Atw Female Short Gland 短自动焊管



Tube Size	Head Size	Ordering Number	Dimensions, mm			
			A	B	C	Tx
1/4"	1/4"	V4ASG19	28.5	19.05	0.5	7.4
3/8"	1/2"	V6ASG19	29.2	19.05	0.8	10.4
1/2"	1/2"	V8ASG19	29.5	19.05	1.0	14.0
1/4"	1/2"	V8 x 4ASG19	29.5	19.05	0.5	7.4

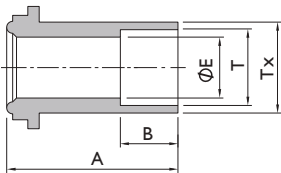
# Weld & Metal Seal Fittings

## Atw Male Long Gland 长自动焊接管



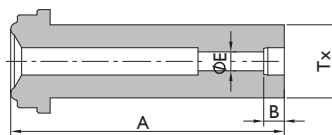
Tube Size	Head Size	Ordering Number	Dimensions, mm			
			A	B	C	Tx
1/4"	1/4"	V4ALG19	43.7	19.05	0.5	7.4
3/8"	1/2"	V6ALG19	46.2	19.05	0.8	10.4
1/2"	1/2"	V8ALG19	46.5	19.05	1.0	14.0
3/4"	3/4"	V12ALG19	52.6	19.05	1.0	20.3
1"	1"	V16ALG19	65.3	24.40	1.0	26.9
1 1/4"	1 1/2"	V8 x 4ALG19	66.5	19.05	0.5	7.4

## Socket Weld Short Gland 短承插焊管



Socket Size	Head Size	Ordering Number	Dimensions, mm				
			A	B	E	Tx	T
1/4"	1/4"	V4SWG	12.7	7.1	4.6	8.9	6.35

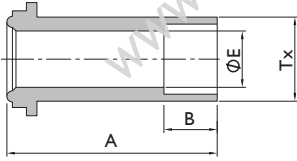
## Socket Weld Reducing Long Gland 变径承插焊管



Socket Size	Head Size	Ordering Number	Dimensions, mm			
			A	B	E	Tx
1/8"	1/4"	V4 x 2SWLG	33.3	2.5	2.3	8.9
1/4"	1/2"	V8 x 4SWLG	38.1	7.1	4.6	15.2

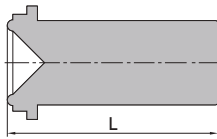
# Weld & Metal Seal Fittings

## Socket Weld Long Gland 长承插焊管



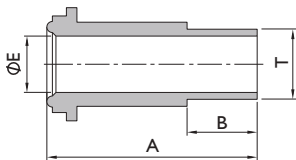
Size	Head Size	Ordering Number	Dimensions, mm			
			A	B	E	Tx
1/8"	1/8"	V2SWLG	17.8	2.5	2.3	5.1
1/4"	1/4"	V4SWLG	33.3	7.1	4.6	8.9
3/8"	1/2"	V6SWLG	38.1	7.9	7.1	15.2
1/2"	1/2"	V8SWLG	38.1	9.6	10.2	15.2
3/4"	3/4"	V12SWLG	50.8	11.2	15.7	22.4
1"	1"	V16SWLG	56.4	15.7	22.1	30.2

## Blind Gland 盲接管



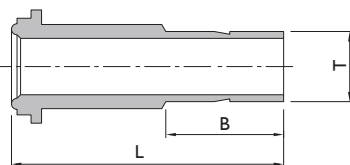
Head Size	Ordering Number	Dimensions, mm
		L
1/8"	V2BLG	17.8
1/4"	V4BLG	33.3
1/2"	V8BLG	38.1
3/4"	V12BLG	50.8
1"	V16BLG	56.4

## Male Weld Gland 外焊接管



Tube Size	Head Size	Ordering Number	Dimensions, mm			
			A	B	E	T
1/8"	1/8"	V2MG	17.8	7.1	1.5	3.18
1/4"	1/4"	V4MG	33.3	10.4	3.0	6.35
3/8"	1/2"	V6MG	38.1	10.4	7.1	9.53
1/2"	1/2"	V8MG	38.1	12.7	10.2	12.70

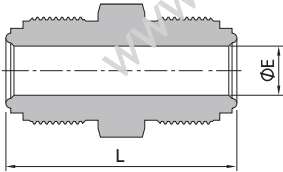
## Tube Adapter 卡套管接管



Tube Size	Head Size	Ordering Number	Dimensions, mm		
			A	B	T
1/4"	1/4"	V4TA	41	16.2	6.35
3/8"	1/2"	V6TA	46	17.8	9.53
1/2"	1/2"	V8TA	49.3	24.4	12.70

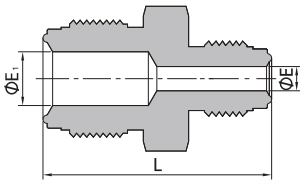
# Weld & Metal Seal Fittings

## Double Male Union 一体MVCR直通



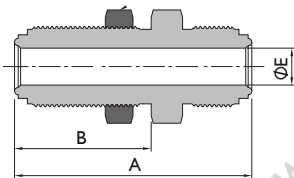
Head Size	Ordering Number	Dimensions, mm	
		E	L
1/8"	V2MU	2.30	28.70
1/4"	V4MU	4.35	39.37
1/2"	V8MU	10.22	46.74
3/4"	V12MU	15.75	61.98
1"	V16MU	22.10	65.79

## Double Male Reducing Union 一体MVCR变径直通



Head Size	Head Size	Ordering Number	Dimensions, mm		
			E	E1	L
1/4"	1/8"	V4 x 2MU	2.30	4.35	34.8
1/2"	1/4"	V8 x 4MU	4.35	10.20	43.4

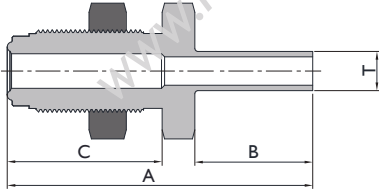
## Bulkhead Union 一体穿板MVCR直通



Head Size	Ordering Number	Dimensions, mm		
		B	A	E
1/4"	V4BH	33.00	56.60	4.35
1/2"	V8BH	37.60	65.25	10.22
3/4"	V12BH	43.40	79.00	15.75
1"	V16BH	47.10	86.00	22.10

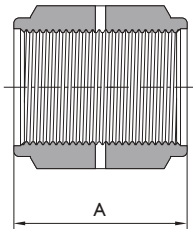
# Weld & Metal Seal Fittings

## TBW Bulkhead Connector 穿板管对焊接头



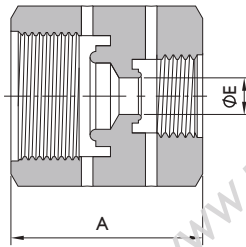
Tube Size	Ordering Number	Dimensions, mm			
		A	B	C	T
1/4"	V4BHY	59.85	19.05	33.00	6.35
1/2"	V8BHY	65.25	19.05	37.60	12.70
3/4"	V12BHY	71.30	19.05	43.25	19.05

## Coupling 一体式内螺纹本体



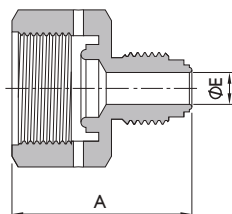
Head Size	Ordering Number	Dimensions, mm
		A
1/8"	V2CG	16.8
1/4"	V4CG	30.2
1/2"	V8CG	33.3
3/4"	V12CG	42.7
1"	V16CG	51.8

## Double Female Reducing Union 一体式FVCR变径



Head Size	Head Size	Ordering Number	Dimensions, mm	
			A	E
1/2"	1/4"	V8 x 4FU	35.8	6.4

## Reducing Adapter 一体式大FVCRx小MVCR转接

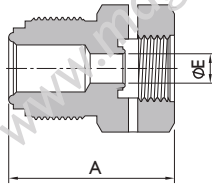


Head Size	Head Size	Ordering Number	Dimensions, mm	
			E	A
1/8"	1/4"	V2 x 4RA	2.3	30.2
1/4"	1/2"	V4 x 8RA	4.6	35.8



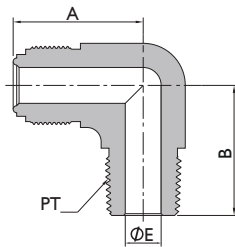
# Weld & Metal Seal Fittings

## Reducing Bushing 一体式大MVCRx小FVCR转接



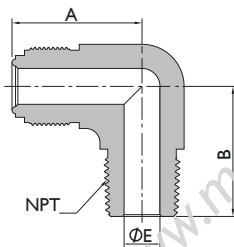
Head Size	Head Size	Ordering Number	Dimensions, mm	
			E	A
1/4"	1/8"	V4 x 2RB	3.3	26.9
1/2"	1/4"	V8 x 4RB	6.4	35.8

## Male Elbow (PT) 一体式MVCRxMPT弯头



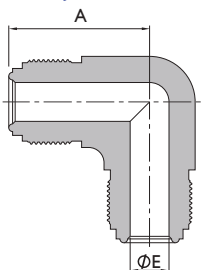
Head Size	PT Size	Ordering Number	Dimensions, mm		
			E	A	B
1/4"	1/4"	V4ME-X32	4.35	27.18	27.18
1/2"	3/8"	V6ME-X32	10.22	36.83	32.00
1/2"	1/2"	V8ME-X32	10.22	36.83	36.83
3/4"	3/4"	V12ME-X32	15.75	48.80	43.50

## Male Elbow (NPT) 一体式MVCRxMNPT弯头



Head Size	NPT Size	Ordering Number	Dimensions, mm		
			E	A	B
1/4"	1/4"	V4ME	4.35	27.18	27.18
1/2"	3/8"	V6ME	10.22	36.83	32.00
1/2"	1/2"	V8ME	10.22	36.83	36.83
3/4"	3/4"	V12ME	15.75	48.80	43.50

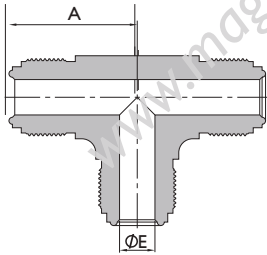
## Union Elbow 一体式MVCR弯头



Head Size	Ordering Number	Dimensions, mm	
		A	E
1/4"	V4UE	27.18	4.35
1/2"	V8UE	36.83	10.22
3/4"	V12UE	48.77	15.75
1"	V16UE	50.80	22.10

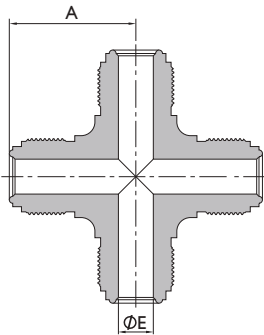
# Weld & Metal Seal Fittings

## Union Tee 一体式MVCR三通



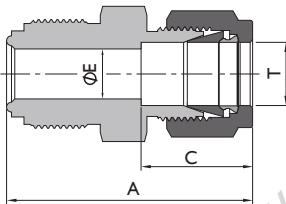
Head Size	Ordering Number	Dimensions, mm	
		A	E
1/4"	V4UT	27.18	4.35
1/2"	V8UT	36.83	10.22
3/4"	V12UT	48.77	15.75
1"	V16UT	50.90	22.10

## Union Cross 一体式MVCR四通



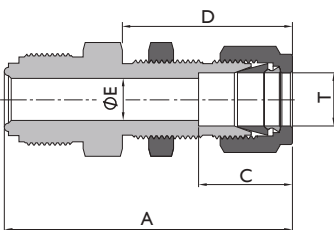
Head Size	Ordering Number	Dimensions, mm	
		A	E
1/4"	V4UC	27.18	4.35
1/2"	V8UC	36.83	10.22
3/4"	V12UC	48.77	15.75
1"	V16UC	50.80	22.10

## Tube Fitting Connector 一体式MVCRxLok转接



Tube Size	Head Size	Ordering Number	Dimensions, mm			
			A	C	E	T
1/4"	1/4"	V4MCK	41.1	17.80	4.35	1/4"
3/8"	1/2"	V6MCK	46.7	19.30	10.22	3/8"
1/2"	1/2"	V8MCK	49.5	21.80	10.22	1/2"

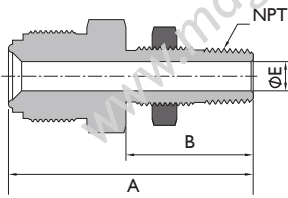
## Tube Fitting Bulkhead Connector 一体式MVCRxLok穿板转接



Tube Size	Head Size	Ordering Number	Dimensions, mm				
			A	C	D	E	T
1/4"	1/4"	V4BHCK	57.2	15.20	33.5	4.6	1/4"
3/8"	1/2"	V6BHCK	64.5	16.80	36.8	7.1	3/8"
1/2"	1/2"	V8BHCK	69.6	22.90	41.9	10.2	1/2"

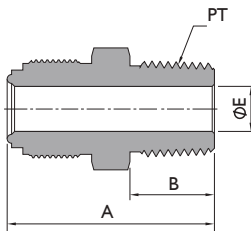
# Weld & Metal Seal Fittings

## Male Bulkhead Connector (NPT) 一体式MVCRxMNPT穿板转接



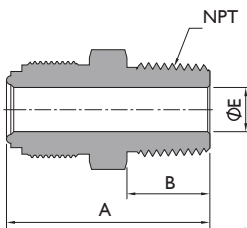
Head Size	NPT Size	Ordering Number	Dimensions, mm		
			A	B	E
1/4"	1/4"	V4BHC	56.1	31.5	7.1
1/2"	1/4"	V8 x 4BHC	59.4	31.5	7.1

## Male Connector (PT) 一体式MVCRxMPT转接



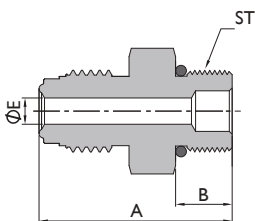
Head Size	PT Size	Ordering Number	Dimensions, mm		
			A	B	E
1/8"	1/8"	V2MC-X32	27.20	9.60	2.30
1/4"	1/4"	V4MC-X32	37.84	14.22	4.35
1/2"	3/8"	V6MC-X32	41.87	14.22	7.44
1/2"	1/2"	V8MC-X32	46.74	19.05	10.22
3/4"	3/4"	V12MC-X32	55.63	19.05	15.75
1"	1"	V16MC-X32	62.74	23.88	22.10

## Male Connector (NPT) 一体式MVCRxMNPT转接



Head Size	NPT Size	Ordering Number	Dimensions, mm		
			A	B	E
1/8"	1/8"	V2MC	27.20	9.60	2.30
1/4"	1/4"	V4MC	37.84	14.22	4.35
1/2"	3/8"	V6MC	41.87	14.22	7.44
1/2"	1/2"	V8MC	46.74	19.05	10.22
3/4"	3/4"	V12MC	55.63	19.05	15.75
1"	1"	V16MC	62.74	23.88	22.10

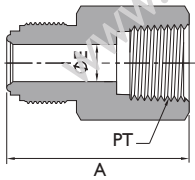
## Male Connector (ST) 一体式MVCRxST外螺纹转接



Head Size	ST Size	Ordering Number	Dimensions, mm		
			A	B	E
1/4"	9/16-18 UNF	V4MCS	33.8	9.9	4.35
1/2"	7/8-14 UNF	V8MCS	42.2	12.7	10.22
3/4"	13/16-12 UNF	V12MCS	51.5	15.0	15.75

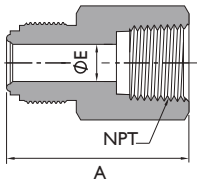
# Weld & Metal Seal Fittings

## Female Connector (PT) 一体式MVCR转FPT转接



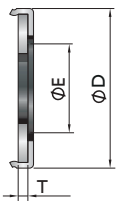
Head Size	PT Size	Ordering Number	Dimensions, mm	
			A	E
1/8"	1/8"	V2FC-X32	30.2	2.30
1/4"	1/4"	V4FC-X32	39.1	4.35
1/2"	3/8"	V6FC-X32	44.7	7.44
1/2"	1/2"	V8FC-X32	50.5	10.22
3/4"	3/4"	V12FC-X32	59.9	15.75
1"	1"	V16FC-X32	63.8	22.10

## Female Connector (NPT) 一体式MVCR转FNPT转接



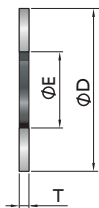
Head Size	NPT Size	Ordering Number	Dimensions, mm	
			A	E
1/8"	1/8"	V2FC	30.2	2.30
1/4"	1/4"	V4FC	39.1	4.35
1/2"	3/8"	V6FC	44.7	7.44
1/2"	1/2"	V8FC	50.5	10.22
3/4"	3/4"	V12FC	59.9	15.75
1"	1"	V16FC	63.8	22.10

## Gasket Retainer Assembly 带爪垫片



Head Size	Ordering Number	Dimensions, mm		
		T	E	D
1/4"	V4GR	0.8	5.5	11.85
1/2"	V8GR	0.8	11.1	19.27
3/4"	V12GR	0.8	16.8	27.9
1"	V16GR	0.8	22.6	34.2

## Gasket 平垫片



Head Size	Ordering Number	Dimensions, mm		
		T	E	D
1/8"	V2GT	0.8	2.3	6.6
1/4"	V4GT	0.8	5.5	12.7
1/2"	V8GT	0.8	11.1	19.8
3/4"	V12GT	0.8	16.8	29
1"	V16GT	0.8	22.6	35.8

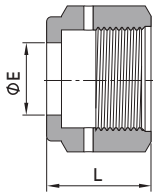
# Weld & Metal Seal Fittings

## Blind Gasket 盲板垫片



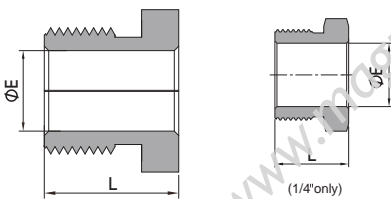
Head Size	Ordering Number	Dimensions, mm	
		D	T
1/8"	V2GB	6.6	0.8
1/4"	V4GB	11.9	0.8
1/2"	V8GB	19.8	0.8
3/4"	V12GB	28.9	0.8
1"	V16GB	35.5	0.8

## Female Nut 内螺纹螺母



Head Size	Ordering Number	Dimensions, mm	
		L	E
1/8"	V2FN	13.5	5.30
1/4"	V4FN	20.6	9.10
1/2"	V8FN	22.4	15.50
3/4"	V12FN	28.4	22.60
1"	V16FN	34.0	30.50

## Male Nut 外螺纹螺母

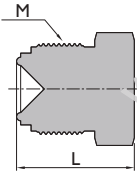


\* V4MNS : Short Male Nut 1/4" Only

Head Size	Ordering Number	Dimensions, mm	
		L	E
1/8"	V2MN	12.7	5.30
1/4"	V4MN	18.0	9.10
1/4"	V4MNS	13.7	9.10
1/2"	V8MN	20.5	15.50
3/4"	V12MN	25.4	22.60
1"	V16MN	30.2	30.50

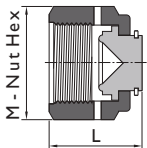
# Weld & Metal Seal Fittings

## Plug 堵头



Head Size	Ordering Number	Dimensions, mm	
		L	M
1/8"	V2PG	17.30	5/16-24 UNF
1/4"	V4PG	23.37	9/16-18 UNF
1/2"	V8PG	27.43	7/8-14 UNF
3/4"	V12PG	36.32	1 1/4-18 UNEF
1"	V16PG	38.61	1 1/2-20 UN

## Cap 堵帽



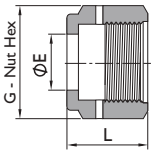
Head Size	Ordering Number	Dimensions, mm	
		L	M
1/8"	V2CP	16.00	5/16-24 UNF
1/4"	V4CP	24.20	9/16-18 UNF
1/2"	V8CP	25.50	7/8-14 UNF
3/4"	V12CP	32.77	1 1/4-18 UNEF
1"	V16CP	39.12	1 1/2-20 UN

# Weld & Metal Seal Fittings

## 高流量连接 – “H”型 VCR

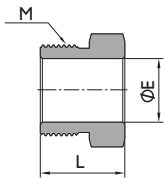
“H”型VCR连接与1/4"VCR连接兼容，设计用于高流量隔膜阀和气体调压阀。  
 为了得到均匀的流动，应用1/4"VCR垫片。

### Hmfs Female Nut H型螺母-F



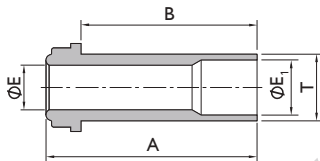
Head Size	Ordering Number	Dimensions, mm		
		L	E	G
1/4"	V4HFN	20.57	9.90	9/16-18 UNF

### Hmfs Male Nut H型螺母-M



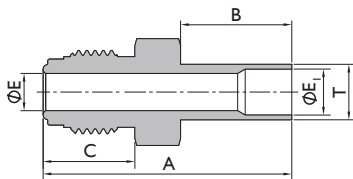
Head Size	Ordering Number	Dimensions, mm		
		L	E	M
1/4"	V4HMN	18.03	9.9	9/16-18 UNF

### Hmfs Long Gland H型对焊接管



Tube Size	Head Size	Ordering Number	Dimensions, mm				
			T	B	A	E <sub>1</sub>	E
3/8"	1/4"	V6X4HLG	9.53	28.4	33.2	7.5	6.28

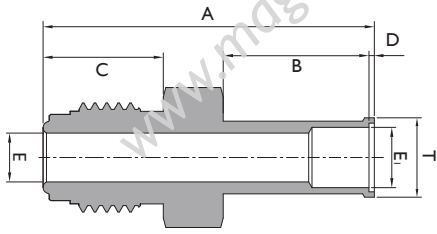
### Hmfs Tbw Body H型TUBE管对焊接头



Head Size	Tube Size	Ordering Number	Dimensions, mm					
			T	E <sub>1</sub>	E	B	C	A
1/4"	3/8"	V4X6HBY	9.53	7.5	6.4	19.05	15.7	42.7

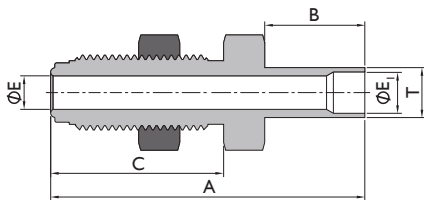
# Weld & Metal Seal Fittings

## Hmfs Atw Body H型TUBE管焊接接管



Head Size(T)	Tube Size	Ordering Number	Dimensions, mm						
			A	B	C	D	E	Ei	T
1/4"	3/8"	V4X6HABY	43.4	19.05	15.7	0.8	7.9	6.4	10.4

## Hmfs Bulkhead Connector H型TUBE管穿板对焊接管

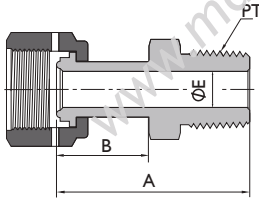


Head Size	Tube Size	Ordering Number	Dimensions, mm					
			A	B	C	E	Ei	T
1/4"	3/8"	V4X6HBHY	59.9	19.05	33.0	6.4	7.5	9.53



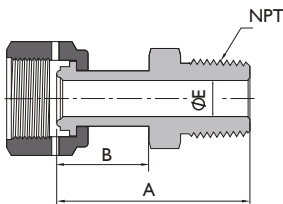
# Weld & Metal Seal Fittings

## Welded Male Connector (PT) 可旋转FVCRxMPT



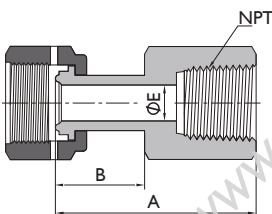
Head Size	PT Size	Ordering Number	Dimensions, mm		
			A	B	E
1/4"	1/4"	V4SGW4MCP	46.6	23.4	4.35
1/2"	3/8"	V6SGW6MCP	47.3	25.4	10.22
1/2"	1/2"	V8SGW8MCP	53.2	25.6	10.22

## Welded Male Connector (NPT) 可旋转FVCRxMNPT



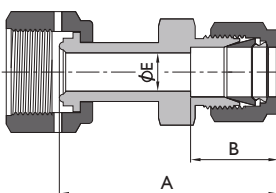
Head Size	NPT Size	Ordering Number	Dimensions, mm		
			A	B	E
1/4"	1/4"	V4SGW4MCN	46.6	23.4	4.35
1/2"	3/8"	V6SGW6MCN	47.3	25.4	10.22
1/2"	1/2"	V8SGW6MCN	53.2	25.6	10.22

## Welded Female Connector (NPT) 可旋转FVCRxMNPT



Head Size	NPT Size	Ordering Number	Dimensions, mm		
			A	B	E
1/4"	1/4"	V4SGW4FCN	46.6	23.4	4.35
1/2"	3/8"	V6SGW6FCN	47.3	26.9	7.44
1/2"	1/2"	V8SGW8FCN	54.2	26.4	10.22

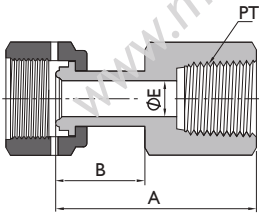
## Welded Lok Connector 可旋转FVCRxLok



Tube Size	Head Size	Ordering Number	Dimensions, mm		
			A	B	E
1/4"	1/4"	V4SGW4K	51.7	17.78	4.35
3/8"	3/8"	V6SGW6K	51.2	19.30	10.22
1/2"	1/2"	V8SGW8K	55.2	21.84	10.22

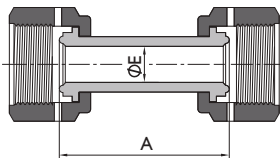
# Weld & Metal Seal Fittings

## Welded Female Connector (PT) 可旋转FVCRxFPT



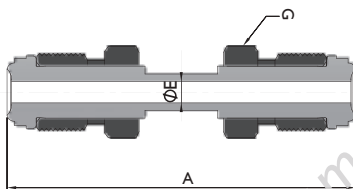
Head Size	PT Size	Ordering Number	Dimensions, mm		
			A	B	E
1/4"	1/4"	V4SGW4FCP	45.0	23.4	4.35
1/2"	3/8"	V6SGW6FCP	43.6	26.9	7.44
1/2"	1/2"	V8SGW8FCP	54.2	26.4	10.22

## Weld Female Union 可旋转FVCR直通



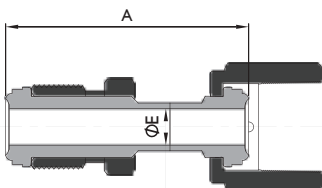
Ordering Number	Head Size	Dimensions, mm	
		A	E
V4SGWU	1/4"	43.00	4.60
V8SGWU	1/2"	44.00	10.20

## Weld Male Union 可旋转MVCR直通



Ordering Number	Head Size	Dimensions, mm		
		A	E	G
V4LGWU	1/4"	60.96	4.60	5/8
V8LGWU	1/2"	65.64	10.20	15/16

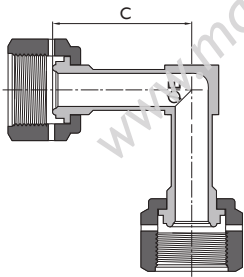
## Weld Apapter 可旋转直通转接



Ordering Number	Head Size	Dimensions, mm	
		A	E
V4LGWSGU	1/4"	45.7	4.60
V8LGWSGU	1/2"	48.5	10.20

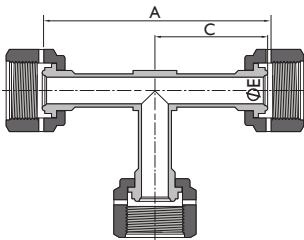
# Weld & Metal Seal Fittings

## Welded Union Elbow 可旋转FVCR弯头



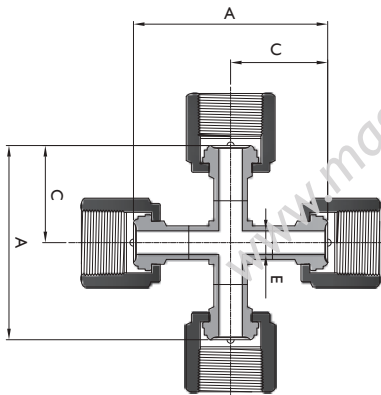
Ordering Number	Head Size	Dimensions, mm	
		C	E
V4SGWE	1/4"	25.40	4.60
V8SGWE	1/2"	29.20	10.20

## Welded Female Union Tee 可旋转FVCR三通



Ordering Number	Head Size	Dimensions, mm		
		A	C	E
V4SGWT	1/4"	50.80	25.40	4.60
V8SGWT	1/2"	58.40	29.20	10.20

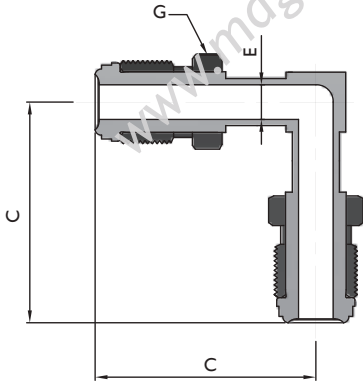
## Welded Female Union Cross 可旋转FVCR四通



Ordering Number	Head Size	Dimensions, mm		
		A	C	E
V4SGWC	1/4"	50.80	25.40	4.60
V8SGWC	1/2"	58.40	29.20	10.20

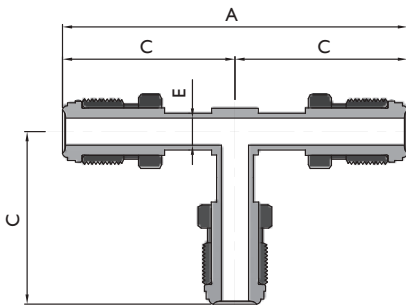
# Weld & Metal Seal Fittings

## Welded Male Union Elbow 可旋转MVCR弯头



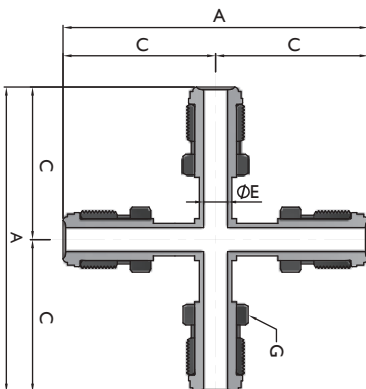
Ordering Number	Head Size	Dimensions, mm		
		C	E	G
V4LGWE	1/4"	40.90	4.60	5/8
V8LGWE	1/2"	46.20	10.20	15/16

## Welded Male Union Tee 可旋转MVCR三通



Ordering Number	Head Size	Dimensions, mm		
		A	C	E
V4LGWT	1/4"	81.80	40.90	4.60
V8LGWT	1/2"	92.50	46.20	10.20

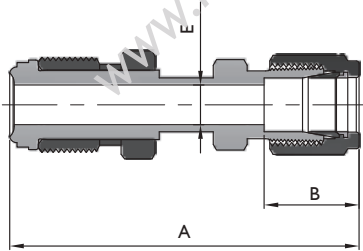
## Welded Male Union Cross 可旋转MVCR四通



Ordering Number	Head Size	Dimensions, mm			
		A	C	E	G
V4LGWC	1/4"	81.80	40.90	4.60	5/8
V8LGWC	1/2"	92.50	46.20	10.20	15/16

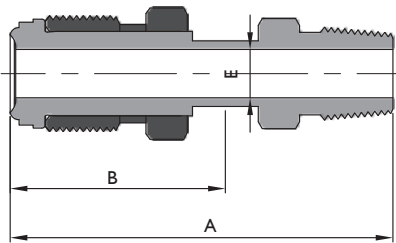
# Weld & Metal Seal Fittings

## Welded Lok Connector 可旋转MVCRxLok



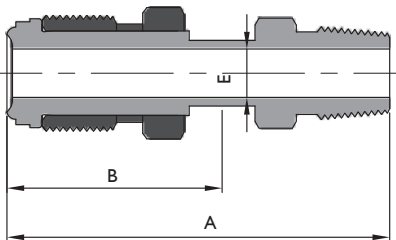
Tube Size	Head Size	Ordering Number	Dimensions, mm		
			A	B	E
1/4"	1/4"	V4LGW4K	67	17.78	4.35
3/8"	1/2"	V6LGW6K	68.3	19.30	10.22
1/2"	1/2"	V8LGW8K	72.3	21.84	10.22

## Welded Male Connector (NPT) 可旋转MVCRxMNPT



Head Size	NPT Size	Ordering Number	Dimensions, mm		
			A	B	E
1/4"	1/4"	V4LGW4MCN	61.9	23.4	4.35
1/2"	3/8"	V6LGW6MCN	64.9	25.4	10.22
1/2"	1/2"	V8LGW8MCN	70.3	25.6	10.22

## Welded Male Connector (PT) 可旋转MVCRxMPT

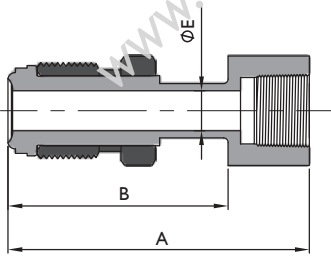


Head Size	PT Size	Ordering Number	Dimensions, mm		
			A	B	E
1/4"	1/4"	V4LGW4MCP	61.9	23.4	4.35
1/2"	3/8"	V6LGW6MCP	64.9	25.4	10.22
1/2"	1/2"	V8LGW8MCP	70.3	25.6	10.22

# Weld & Metal Seal Fittings

## Welded Male Connector (NPT)

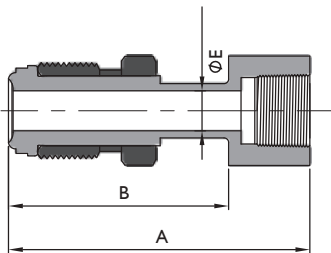
可旋转MVCRxMNPT



Head Size	NPT Size	Ordering Number	Dimensions, mm		
			A	B	E
1/4"	1/4"	V4LGW4MCN	61.9	23.4	4.35
1/2"	3/8"	V6LGW6MCN	65.7	26.9	7.44
1/2"	1/2"	V8LGW8MCN	71.3	26.4	10.22

## Welded Male Connector (PT)

可旋转MVCRxMPT



Head Size	PT Size	Ordering Number	Dimensions, mm		
			A	B	E
1/4"	1/4"	V4LGW4MCP	60.5	23.4	4.35
1/2"	3/8"	V6LGW6MCP	65.7	26.9	7.44
1/2"	1/2"	V8LGW8MCP	71.3	26.4	10.22